



MCS-RTHD-OIL-SENSOR-KIT

Description & Specifications



Part # **MCS-RTHD-OIL-SENSOR-KIT**

Description

MCS-RTHD-OIL-SENSOR-KIT is used in the refrigeration systems in compressors to maintain a desired level.

MCS-RTHD-OIL-SENSOR-KIT uses light reflecting from a conical glass prism as a means of detecting the absence of a fluid at the level of the glass cone. When no fluid covers the lower half of the cone infra-red light from the module reflects from the mirror-like inner surface of the cone back to a light detector signaling the electronic module to switch. This signals the module to switch. When fluid covers the lower half of the cone, the light from the emitter disperses into the fluid. The resulting absence of reflected light is detected by the receiver and the module switches in the opposite direction.

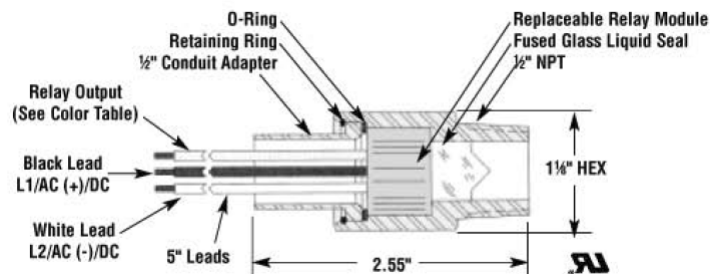
- Robust design
- Serviceable without refrigerant loss
- No moving parts
- Fused glass hermetic seal

Parts Included:

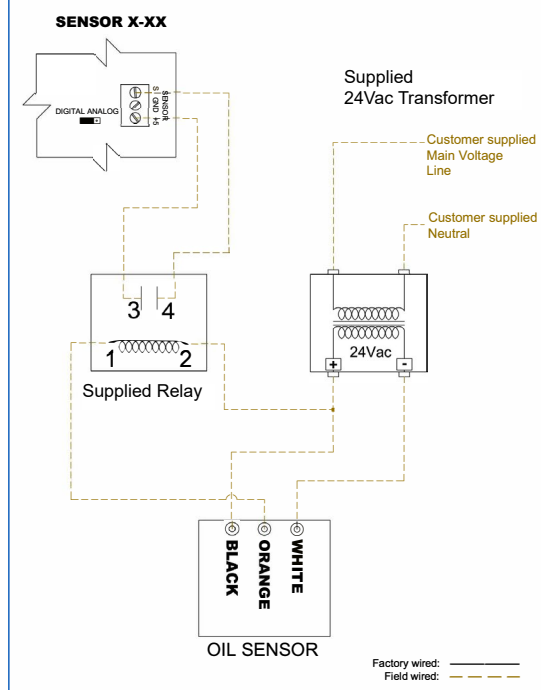
- MCS-24VOLT-115 - 115V to 24V 30VTransformer
- Plug-in Relay
- Liquid Level Switch
- Relay Socket for Plug-in Relay
- DIN-RAIL-MOUNT-KIT-2.5
- Wiring Diagram

Specifications

| | |
|-------------------------------|-----------------------------------|
| Mounting..... | Horizontal Only |
| Connection | 1/2" NPT |
| Voltage | 24V AC/DC 0.5 amp |
| MIN/MAX Fluid Temp..... | -40°F + 210°F (actual fluid temp) |
| Switch Inductive Rating | 35 va Pilot Duty Rated |
| Switches | Solid-State for liquid sensing |
| Pressure Rating..... | 1200 PSI Working, 6000 Burst |
| Power for Operation | 3.5 MA ac, 5.5 ma DC |
| Minimum Load..... | 2 ma (without bleed resistor) |
| UL Standards..... | #873 & 207 file number E141577 |
| Approved | Nema 4 and 4X for Water Tight |



MCS-RTHD-OIL-SENSOR CONNECTION



Revision - 2023-07-18-4-11 PM